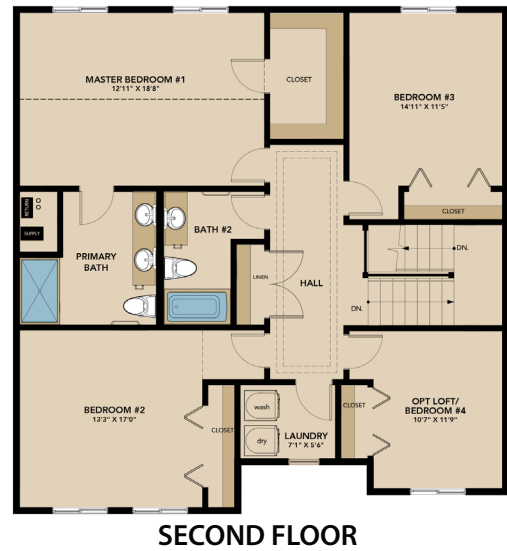




The Lillian

Brochure is representative. Drawing may include some optional features and is subject to change. Contact builder for specific details.



4-bedroom
2.5-bath
3-car garage

SQ Footage:
 First Floor - 1,023
 Second floor - 1,353
 Basement (optional) - 1,023
 Total (1st & 2nd) - 2,376

Michelle Renninger
 C: (219) 406-2143
 E: michelle@vikinghomesbuilt.com

James Garofalo
 C: (708) 296-0908

